

# Laboratory Manual Trends in Medical Biotechnology

*(for Master of Science in Biotechnology)*

*Edited by:*  
**Dr. Asita Elengoe**



*Published by:*  
**Lincoln University College**

[www.lincoln.edu.my](http://www.lincoln.edu.my) ● [www.lucp.net](http://www.lucp.net)

# Laboratory Manual Trends in Medical Biotechnology

*(for Master of Science in Biotechnology)*

*Edited by:*  
**Dr. Asita Elengoe**  
*Associate Professor*  
Lincoln University College, Malaysia



*Published by:*  
**Lincoln University College**

Copyright © 2024

Lincoln University College, Malaysia

All rights reserved

No part of this book can be reproduced or transmitted by any means, electronic or mechanical, including photocopying recording or by any information storage and retrieval system without prior written permission from the publisher.

Published on: 10-05-2024

*Edited by: Dr. Asita Elengoe*

*Published by:*

**LINCOLN UNIVERSITY COLLEGE**

Wisma Lincoln, No. 12,14,16 & 18,  
Jalan SS 6/12, Off Jalan Perbandaran  
47301 Petaling, Jaya,  
Selangor Darul Ehsan, Malaysia

Tel.: +603-7806 3478

Fax: +603-7806 3479

Toll Free: 1-300-880-111

E-mail: [lucp@lincoln.edu.my](mailto:lucp@lincoln.edu.my)

[info@lincoln.edu.my](mailto:info@lincoln.edu.my)

Web: [www.lucp.net](http://www.lucp.net)

[www.lincoln.edu.my](http://www.lincoln.edu.my)

ISBN: 978-967-2819-18-9

e-ISBN:-978-967-2819-12-7

**Printed By:**

**PERCETAKAN HORIZON WAVES 27**

Jalan Velox 2, Taman Industry Velox,  
4800 Rawang Selangor, Malaysia

**LINCOLN UNIVERSITY COLLEGE  
FACULTY OF SCIENCE (DEPARTMENT OF BIOTECHNOLOGY)  
LABORATORY SAFETY RULES**

---

The following rules must be obeyed by all students in the science laboratory of the faculty. Wilful or repeated in advertent non-compliance may result in dismissal or suspension from the laboratories

---

- **No entry without permission:**
  - Outsiders are not allowed to enter the laboratory without permission.
  - No student is allowed to enter the laboratory unless permission has been given by a laboratory assistant or a lecturer.
  
- **At work in the laboratory:**
  - No experiment may be attempted without the knowledge and permission of a lecturer.
  - Students must wear shoes in the laboratory. Students wearing slippers or sandals are not allowed to work in the laboratory.
  - Lab coat must be worn at all times during practical work in the laboratory.
  - Do not mouth pipette chemicals.
  - Do not eat or smoke in the laboratory.
  - Do not taste any chemicals, including dilute solutions. If any acid or alkali accidentally enters your eyes or mouth, wash immediately with plenty of tap water. Inform your lecturer, and seek medical attention if necessary.
  - Paper should be used to light up the Bunsen burners.
  - Used match sticks, filter papers, and other solid waste must never be thrown into the sinks. They must be thrown into the dustbins provided. Lighted match sticks and smoldering materials must be extinguished with tap water before thrown in to the dustbins.
  - Any equipment broken or damaged must be reported to the laboratory assistant.
  
- **Before leaving the laboratory:**
  - All the equipment and benches must be cleaned at the end of each practical session.
  - Wash hands and arms with soap and water before leaving the laboratory.
  - No student is allowed to take away any chemicals, equipment or other property of the laboratory.

## INTRODUCTION

### 1. The Scientific Method

- Making observations
- Generating hypotheses
- Making predictions
- Designing and carrying out experiments
- Constructing scientific models

### 2. Practical Exercises

To get the most out of the practical exercises, you need to follow carefully the instructions given. These instructions have been designed to provide you with the experience in the following skills:

- Following instructors
- Handling apparatus
- Having due regard for safety
- Making accurate observations
- Recording results in an appropriate form
- Presenting quantitative results
- Drawing conclusions

### 3. Following Instructions

Instructions are provided in the order in which you need to carry them out. We would advise that before carrying out the instructions, you read through the entire exercise. This will help you to remember what you have learned.

Each practical exercise in the book begins with a few lines describing its purpose in most cases the following headings are also used:

- Procedure-numbered steps that need to be carried out.
- For consideration -some questions to help you think carefully about the results you have obtained.
- Materials-a list of the apparatus, chemicals and biological materials you need.

### 4. Handling apparatus

Biologists need to be able to use many different types of apparatus, for example, photometers (to measure water uptake by plants), respirometers (to measure oxygen uptake or carbon dioxide production), Petri dishes (for plating out bacteria and other microorganisms) and the light microscope (to magnify specimens). Many of the practical exercises are designed to help you derive the maximum benefit from a piece of apparatus.

### 5. Having Due Regard for Safety

Surveys have been shown that science laboratories are among the safest places to be. Nevertheless, this is no cause for complacency.

- Always move slowly and carefully in a laboratory.
- Never put your fingers in your mouth or eyes after using chemicals or touching biological specimens until you have washed your hands thoroughly with soap and warm water, and dried them.
- Make sure glass objects (e.g, thermometers, beakers) cannot roll off tables or be knocked onto the floor.
- Wear safety goggles whenever there is a risk of damage to the eyes.

#### Situations of risk include:

- Heating anything with a Bunsen burner (even heating water has its dangers')
- Handling many liquids, particularly those identified as corrosive, irritant, toxic or harmful

- Handling corrosive or irritant solids
- Some dissection work
- Allow Bunsen burners, tripods, gauzes and beakers to cool down before handling them.
- Never allow your own body fluids (especially blood and saliva) to come into contact with someone else, or theirs into contact with you.
- Keep long hair tied back and do not wear dangly earrings.
- Do not allow electrical equipment to come into contact with water.
- If you are unsure how to carry out a scientific procedure, ask.
- Make sure you understand why you are going to do something before you do it.
- Wear a lab coat when using chemicals or handling any biological specimens.
- Follow exactly agreed procedures with regard to cuts, burns, electric shocks and other accidents (e.g. with chemicals).
- Follow exactly all specific safety instructions given in this book or provided by your teacher for particular practical exercises (e.g. use of gloves, disinfection)

With practice, these procedures should become second nature to you. They will enable you to carry out practical work in safety.

## 6. Making Accurate Observations

In most cases the practical exercise will make it clear what you need to observe, e.g. the time taken for a certain volume of gas to be evolved or the width of a sample cells. Ensure that you know how to use any necessary equipment before starting practical. Think carefully about the precision with which you will make your observations.

## 7. Recording Results in an Appropriate Form

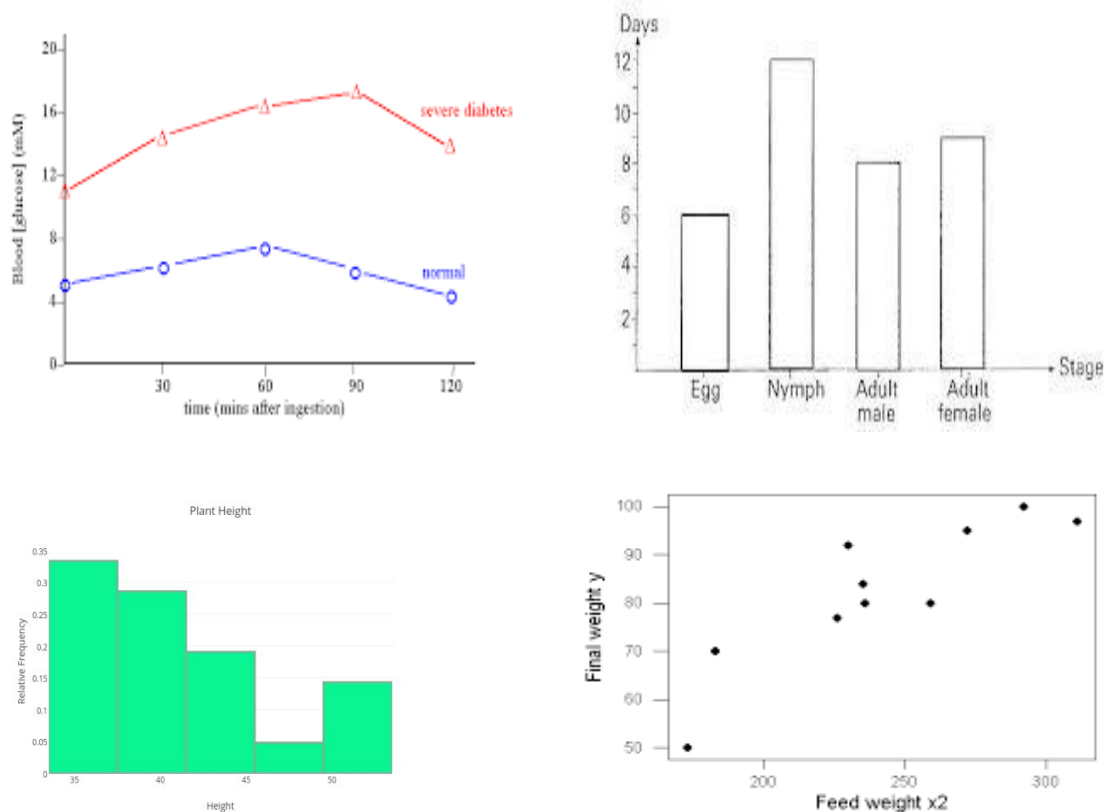
Results can be recorded in various ways. Often it is helpful to record raw data in a table. Most data will be in the form of numbers, i.e. they will be quantitative data (also known as numerical data). However, some data, e.g. flower colour, will be qualitative data.

One form in which some biological findings can be recorded is a drawing. You don't need to be professional artist to make worthwhile biological drawings. If you follow the following guidelines, a drawing can be of considerable biological value:

- Ensure that your completed drawing will cover at least a third of A4 page.
- Plan your drawing so that the various parts are in proportion and will not be drawn too small. Small marks to indicate the length and breadth of the drawing are a great help in planning and a faint outline can be rapidly drawn to show the relative positions of the parts.
- The final drawing should be made with clean, firm lines using a sharp HB pencil and, if needed, a good quality eraser (not a fluid). If important details are too small to be shown in proportion, they can be put in an enlarged drawing at the side of the main drawing.
- Avoid shading and the use of colour unless you are an excellent artist and they really help, for example when drawing soil profiles.
- When drawing structures seen with the naked eye or hand lens, use two lines to delineate such things as blood vessels and petioles. This will help you to indicate the relative widths of such structures.
- When drawing low power plan drawings from the light microscope, do not attempt to draw individual cells-just different tissues.
- When drawing plant cells at high power under the light microscope, use two lines to indicate the width of cell walls, but a single line to indicate a membrane.
- Always put a scale on each drawing.

## 8. Presenting Quantitative Results

Presentation of data is all about using graphs or other visual means to make it easier to see what your results tell you. The following four ways of presenting data are the most frequently used in biology: line graphs, bar charts, histograms and scatter graphs (Figure 1).



**Figure 1:** Line graphs, bar charts, histograms and scatter graphs

## 9. Drawing Conclusions

Finally, you will need to draw conclusions. If your practical exercise has involved the testing of a hypothesis, for example that the enzyme pepsin works better at low pH than in neutral or alkaline conditions, your conclusion should indicate whether the hypothesis has been refuted (i.e. shown not to be the case) or supported. Of course, even if your hypothesis has been supported, it doesn't mean that it has been confirmed with 100% certainty- in other words it isn't proved. Science proceeds more by showing that certain ideas are wrong than by showing that others are right (think about that!). Your conclusion might therefore include further ways of testing the original hypothesis, or might raise new possibilities to be investigated.

Often you will only be able to arrive at your conclusions after statistically analysing your data.

## 10. Writing a Scientific Lab Report

### Title

- Communicate the subject investigated in the paper.

### Introduction

- State the hypothesis.
- Give well-defined reasons for making the hypothesis.
- Explain the biological basis of the experiment.
- Cite sources to substantiate background information.

- Explain how the method used will produce information relevant to your hypothesis.
- State a prediction based on your hypothesis. (If the hypothesis is supported, then the results will be.)

### **Materials and Methods**

- Use the appropriate style.
- Give enough detail so the reader could duplicate your experiment
- State the control treatment, replication and standardized variables that were used.

### **Results**

- Summarize the data (do not include raw data).
- Present the data in an appropriate format (table or graph).
- Present tables and figures neatly so they are easily read.
- Label the axes of each graph completely.
- Give units of measurement where appropriate.
- Write a descriptive caption for each table and figure.
- Include a short paragraph pointing out important results but do not interpret the data.

### **Discussion**

- State whether the hypothesis was supported or proven false by the results, or else state that the results were inconclusive.
- Cite specific results that support your conclusions.
- Give the reasoning for your conclusions.
- Demonstrate that you understand the biological meaning of your results.
- Compare the results, with your predictions and explain any unexpected results.
- Compare the results to other research or information available to you.
- Discuss any weaknesses in your experimental design or problems with the execution of the experiment.
- Discuss how you might extend or improve your experiment.

### **Conclusion**

- Restate your conclusion.
- Restate important results.

### **Literature Cited**

- Use the proper citation form in the text.
- Use proper citation form in the Literature Cited section.
- Refer in the text to any source listed in this section.

### **Acknowledgement**

- State any appropriate acknowledgement that you think is necessary.



## TRENDS IN MEDICAL BIOTECHNOLOGY

### Table of Content

<b>Experiments:</b>		<b>Page</b>
1	Random Amplification of Polymorphic DNA as a useful marker	8
2	PCR-RFLP of medicinal mushroom	12
3	Gel Purification: Binding, Washing and Eluting	16
4	Western Blotting and Analysis	18
5	RNA Isolation & RT-PCR	22
6	Preparation of template for DNA Sequencing & troubleshooting	32

*Some pages are omitted from the book preview*

**Lincoln University College**

Wisma Lincoln, No. 12,14,16 & 18,  
Jalan SS 6/12, Off Jalan Perbandaran  
47301 Petaling, Jaya,  
Selangor Darul Ehsan, Malaysia  
Tel.: +603-7806 3478, Fax: +603-7806 3479  
Toll Free: 1-300-880-111  
E-mail: [lucp@lincoln.edu.my](mailto:lucp@lincoln.edu.my)  
[info@lincoln.edu.my](mailto:info@lincoln.edu.my)  
Web: [www.lucp.net](http://www.lucp.net)  
[www.lincoln.edu.m](http://www.lincoln.edu.m)

e-ISBN: 978-967-2819-12-7

ISBN 978-967-2819-18-9



[www.lincoln.edu.my](http://www.lincoln.edu.my) ● [www.lucp.net](http://www.lucp.net)